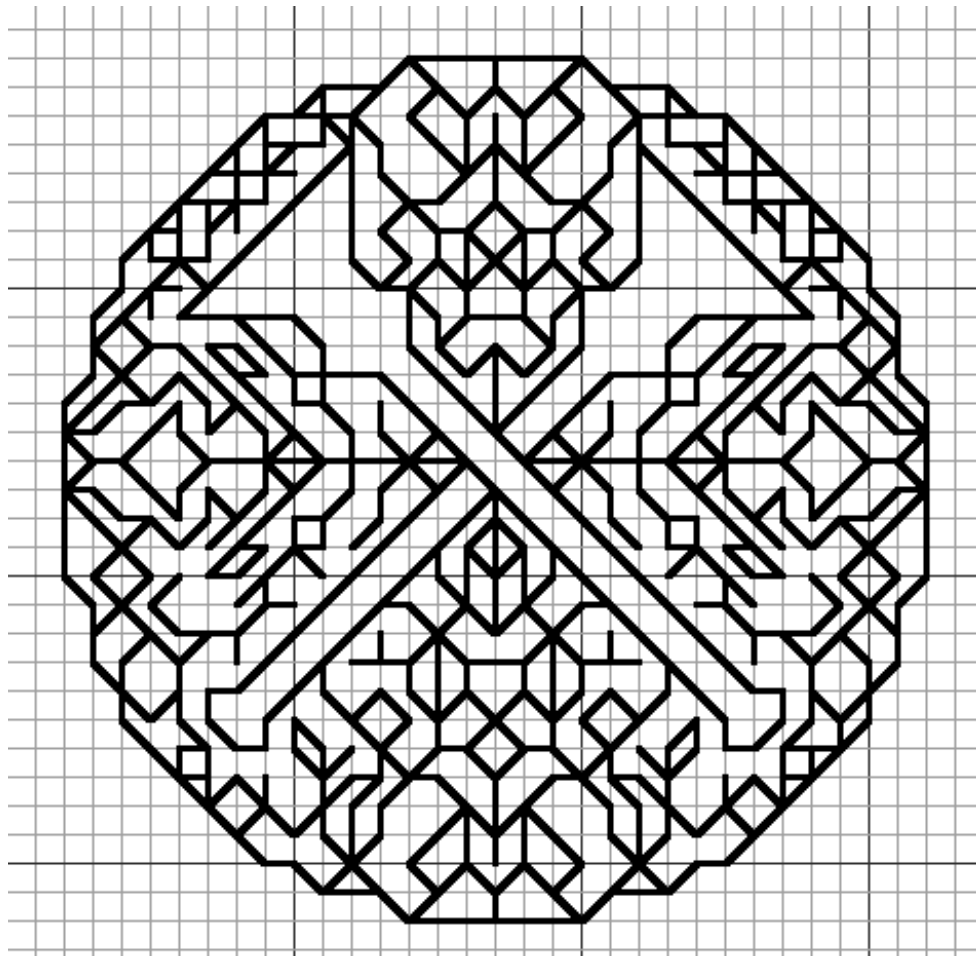
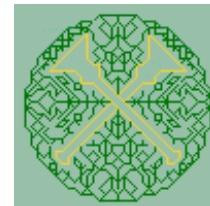


Blackwork Herald's Badge



Fabric: Evenweave 14, Antique Green
30w X 30h Counts

Size(s): 14 Count, 2-1/8w X 2-1/8h in
16 Count, 1-7/8w X 1-7/8h in
18 Count, 1-5/8w X 1-5/8h in
22 Count, 1-1/4w X 1-1/4h in



Floss Used for Backstitches:

Symbol	Strands	Type Number	Color
—	1	DMC 307	Lemon
—	1	DMC 700	Christmas Green-BRT

Stitching Instructions

Stitch the straight trumpets in 307 in Holbein stitch.
The rest of the stitching is Holbein stitch in 700.

Copyright (c) 1999 Kristin Gulling-Smith

Email: MSstitchery@aol.com

Website: <http://www.crosswinds.net/~msstitchery/>

This chart is for personal use only and may not be kitted or sold.