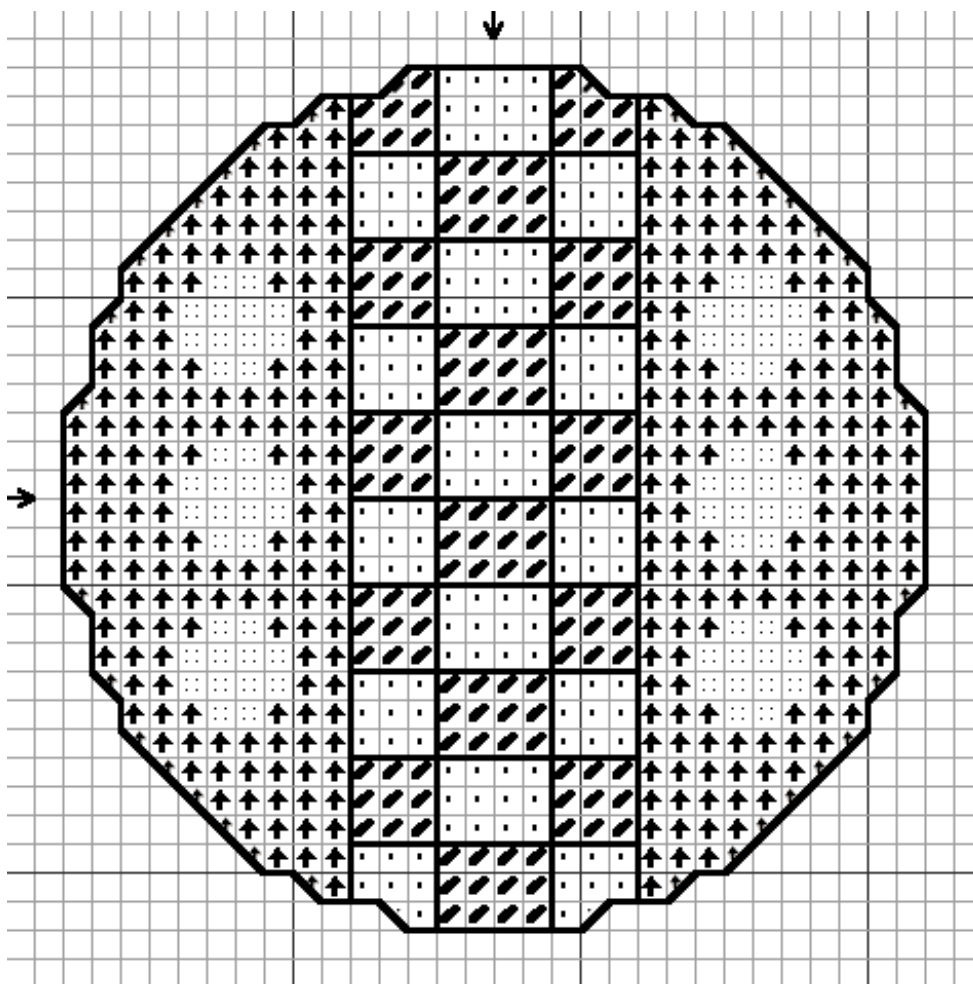






Chancellor's Badge






Fabric: Evenweave 14, White
30w X 30h Counts

Size(s): 14 Count, 2-1/8w X 2-1/8h in
16 Count, 1-7/8w X 1-7/8h in
18 Count, 1-5/8w X 1-5/8h in
22 Count, 1-1/4w X 1-1/4h in


Floss Used for Full Stitches:

Symbol	Strands	Type Number	Color
	2	DMC 307	Lemon
	2	DMC 550	Violet-VY DK
	2	DMC 700	Christmas Green-BRT
	2	DMC 797	Royal Blue

Floss Used for Quarter Stitches:

Symbol	Strands	Type Number	Color
	2	DMC 550	Violet-VY DK
	2	DMC 700	Christmas Green-BRT
	2	DMC 797	Royal Blue

Floss Used for Backstitches:

Symbol	Strands	Type Number	Color
	1	DMC 310	Black

Stitching Instructions

Backstitch in 310.

Blazon: Azure, a pale checky gules and argent between six bezants in pale three and three.

Copyright (c) 2000 Moonshadow Stitchery
Designed by Kristin Gulling-Smith
(*Athenais Bryennissa of the Shire of Bronzehelm*)
Email: MSstitchery@aol.com
Website: <http://www.crosswinds.net/~msstitchery/>

This chart is for personal use only; it may not be sold or kitted.

Permission is granted to reprint this chart in S.C.A. publications only.