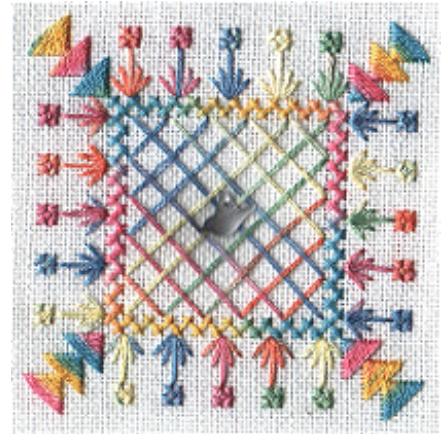
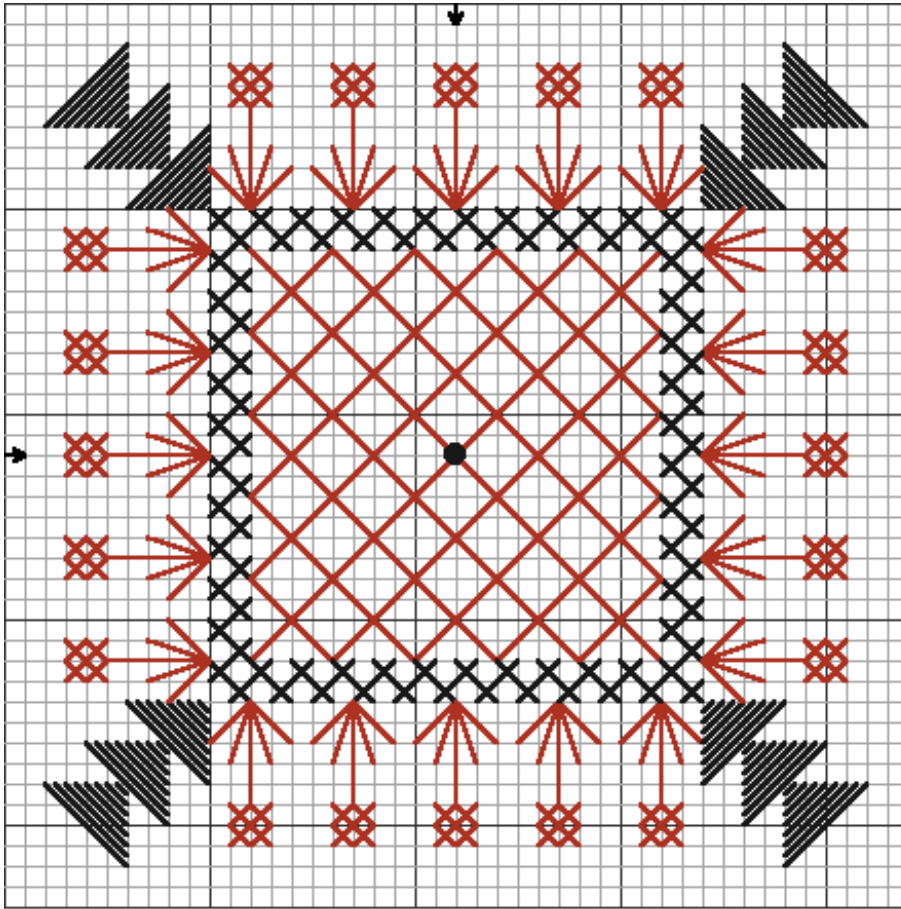


"Rainbow Dreams"

Designed by Kristin Gulling-Smith
Copyright © 2001 Moonshadow Stitchery



Fabric: 28-count Antique White Jobelan (429-101) from Wichelt Imports, Inc.
Fibres: OWS 010 Psychedelia
OWS 056 Tropical Storm
Embellishment: Mill Hill Glass Treasure 12052 White Dove
Stitches: Diagonal Satin, Herringbone, Rice, Straight

This chart is a gift. It may be copied freely but may not be kitted or sold.

A complimentary chart for Olde Willow Stitchery

Stitching Instructions

Use two strands of floss for all stitches.

The black lines on the chart represent OWS 056 Tropical Storm. The red lines represent OWS 010 Psychedelia.

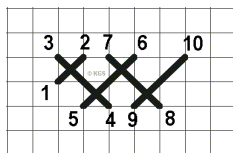
Start by stitching the herringbone square, then continue by stitching the diagonal satin stitched triangles.

The flowers are stitched using straight stitches for the stems and leaves, and rice stitch for the blossoms.

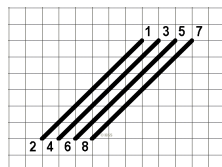
The center square is a series of straight stitches. First stitch all straight stitches in one direction, starting at a corner, then stitch the opposite direction, weaving the stitches over and under the first series as you go.

Attach the Treasure where indicated by the dot on the chart using a beading needle and thread.

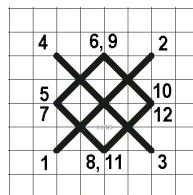
Stitch Diagrams



Herringbone



Diagonal Satin



Rice

Moonshadow
Stitchery

Fun and unusual needlework designs by

Kristin Gulling-Smith

P.O. Box 20584

Billings, MT 59104

E-Mail: MSstitchery@email.com

Website:

<http://www.crosswinds.net/~msstitchery>